



THE UNIVERSITY OF
WESTERN AUSTRALIA
Advancing International Excellence

Green-e-News

October 2008 Issue 5

Inside this issue:

Sydney Commuter	2
UWA OPP	2
Colin the Whale	2
Hybrid Cars	3
WA Australia's Tidi-	4
Waste Audit	4

Melbourne was amazing! So was the conference. On Sunday, I head off again. This time to Christchurch for the Australasian Campuses Towards Sustainability Conference. I will catch you up with the happenings at both conferences upon my return from NZ. This month we look at: my Green Office presentation for Main Roads; some interesting results from a Sydney commuter experiment; unveil the new sustainability focus of the UWA Operations and Priorities Plan; and compare hybrid vehicles. There will be a brief mention of 'Colin' the baby whale in Sydney and some updates from the waste audit. Enjoy!

Need to rid yourself of some plastic bags?

While we are working towards creating better waste management at UWA, you can find plastic bag recycling bins at Claremont Coles. Just look for the red wheelie bins.

Green Offices at UWA

- Centre for Advancement of Teaching and Learning
- Currie Hall
- EDFAA Library
- Facilities Management
- Faculty of Arts, Humanities and Social Sciences (Deans Office & Student Office)
- Faculty of Education
- Finance and Resources Directorate
- Financial Services
- Governance Services
- Graduate Research & Scholarships Office
- Human Resources
- Information Technology Services
- Medical and Dental Library
- Organisational & Staff Development Services
- Reid Library
- School of Animal Biology
- School of Environmental Systems Engineering
- Student Administration
- Student Services
- University Club
- University Theatres
- UWA Childcare Centre
- Vice-Chancellery
- WA Institute of Medical Research
- Perth International Arts Festival
- School of Pathology & Laboratory Medicine
- AIMS

Off Campus Inspirations

Green Office for Main Roads

On the first day of spring, I took the Green Office out to the streets. The Department of Main Roads have dedicated September as 'Sustainability September', generating a variety of events and talks to inspire staff towards sustainable practices.

Organiser of 'Sustainable September' Hayley Lamont from the Business

Performance Branch, upon hearing of the Green Office program, invited me to come and share its secrets to staff during the event. I walked the crowd through the history of the Green Office and some of it's varied practical applications. It was an ideal time to communicate lessons learnt from the program with the newly established Sustainability Advisory Committee about to commence it's meeting schedule. I communicated the need to get Sustainability into the governance level of the University and how the SAC will now facilitate this. The talk was received well and raised some interesting questions. The audience appreciated knowing how to make a difference in small practical ways. One inspiration I took from the event was the positive role of the 'Green Office'. I saw that this would reduce the need for education as sustainable operations become mandatory at UWA. That 'Green Offices' at UWA will receive Sustainable change well, due to their prior experience with practical green applications.



Sydney Commuter Race

Sydney's public transport has been put to the test as six commuters raced into the city using different modes of transport. Train, bus, car, scooter, bike and foot competed for the perhaps unenviable prize, arriving at work on time.

The course started in Ryde on Sydney's North shore, competitors arrived later in the heart of the city at Parliament House a distance of 15.5km according to the organisers of the race. The interesting bit, was how much later. The results;

1. Scooter - 25 min
2. Bicycle - 32 min
3. Car - 37 min
4. Bus - 1hr 12 min
5. Train - 1 hr 14 min
6. Foot - 1 hr 20 min



Embarrassingly, public transport only managed to beat a commuter who jogged into the city! The race was run by the Sydney Morning Herald newspaper. Thankfully the two, two-wheelers which came in at the top represent fuel efficient, and apparently time-efficient modes of transport.

The 2009-2013 UWA Operations and Priorities Report is currently under construction. For the first time this report will contain a section specifically devoted to sustainability. The section will highlight a goal of 'ensuring sustainability at UWA'. Key areas for driving this include Awareness, Compliance, Procurement, and Strategy



Colin the whale.

Colin

We all watched in amazement, images of an orphaned baby whale, suckling the hull of a yacht, Sunday 17th August. The baby whale who was named 'Colin' became separated from his mother in Pittwater NSW, 40km north of Sydney CBD. Attempts by and Staff from NSW Parks and Wildlife Service to tow him out to sea proved unfruitful, when he was seen to return shortly after. Other options for rescuing him were explored including: feeding him on cream and crushed fish; and placing next to a nursing mother. Exploration into these options suggested that they were loaded with risk from a variety of logistical perspectives. Eventually the difficult decision to euthanise him was made. The decision to end his life was made by vets who noted his rapid decline, saying that he was having trouble breathing and that his flippers were at an unusual angle.

Interestingly, during the exploration phase of this rescue mission, the federal defence minister offered to mobilise defence force assets if required.

Highlighting — Hybrid Cars

In simple terms, a hybrid car is one with a combination of an efficient petrol motor with an electric motor. In the HONDA, the electric motor helps the petrol motor keep fuel consumption down, while the TOYOTA can run on the electric motor alone if the car is moving slowly. Both systems use the electric and petrol motors together when more power is needed.

In both cars, the electric motor is powered by a battery. Whenever you brake, the electric motor converts to a generator and tops up the battery.

The TOYOTA system turns off the petrol engine when decelerating and in some light throttle conditions. The power-assisted brakes, power steering, air conditioning and other electrical systems continue to operate as normal. HONDA keeps the engine running on long downhill stretches, but only on one cylinder.

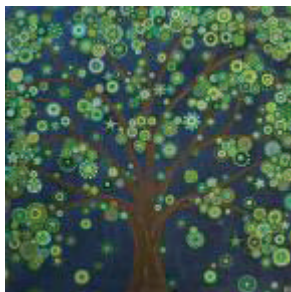
Both cars turn off the petrol engine when you stop at the lights (if it's not off already with the TOYOTA, and only if the air conditioning is off in the HONDA), but as soon as you put your foot on the accelerator the car springs to life and off you go.

	Honda Civic Hybrid	Toyota Prius
Body style	4-door sedan	5-door hatch
Petrol engine capacity (L)	1.3	1.5
Petrol engine power (kW)	69	57
Environment		
Fuel consumption (L / 100km)	5.2	4.4
Greenhouse rating	8	8.5
Safety and security		
Airbags	Driver, passenger, side	Driver, passenger
ABS	•	•
Immobiliser	•	•
Crash test rating	★★★★ (A)	★★★★ (B)
Price	\$29,990	\$36,500(C)

(A) US National Highway Traffic Safety Administration rating. Not comparable to ANCAP or Euro NCAP ratings.

(B) EuroNCAP/ANCAP rating.

(C) Base model. Also available with the i-Tech options pack (\$8100), which includes smart entry and start, GPS system, side and curtain airbags, vehicle stability control, six-disc CD changer and Bluetooth telephone controls on the steering wheel.



WA—Australia's tidiest?

There has been a slight decrease in the amount of litter on an Australia-wide scale, according to the latest National Litter Index, although NSW, SA and WA bucked the overall trend by recording increases in the number of litter items per 1,000m² from 2006/07 to 2007/08.

The national average across all 983 sites surveyed for the 2007/08 Keep Australia Beautiful index was 68 litter items per 1,000m², down on the 74 items in 2006/07 and 70 in 2005/06.

Cigarette butts were the most pervasive item nationally, with an average 32 butts per 1,000m² across the nation. These items, however, only contributed 0.004L per 1,000m² in volume to the litter stream, a small fraction of the overall average 6.06L volume per 1,000m².

The items that contributed the greatest volumes to the litter stream were constructed of plastic materials, adding an average 2.79L of litter volume per 1,000m². Paper and paperboard objects also contributed strongly (average 1.88L) to the total volume within the litter stream.

There were several patterns identified across the national data, including:

- Industrial sites are associated with both large numbers of items as well as large estimated litter volume
- Highway sites are associated with large volumes of litter but only moderate numbers of items
- Retail sites are associated with large numbers of items but only small volumes of litter
- Recreational Parks contribute both a small number of items and a low volume to the overall litter stream



The cleanest overall state was Victoria, with 48 litter items per 1,000m², while WA was the worst at 85 pieces, some 25% greater than the national average and significantly above the next worst state, NSW, which had an average 77 items per 1,000m².

Waste Audit Update

It has arrived! The draft report for the Waste Management Audit carried out by Encycle. It is 60 pages and very comprehensive. It details strategies for increasing and streamlining recycling in both offices and the public place. Specifically, this means provision of a clear system for recycling anything that can be recycled on campus. Other suggestions include: The use of projector screens in meetings for agendas and working documents (to prevent the need for multiple print-outs); The use of electronic invoicing; scanning and emailing in preference to faxing and print outs; the use of electric filing systems to minimise printing; and the use of a University intranet advertising board for sale/pick up of unwanted furniture. One particularly disturbing outcome was the frequent use of large skip bins for the disposal of numerous waste items. The contents of such skip bins was destined to be taken to landfill. Environmental Services will use this information to construct a waste management plan to highlight priority areas for implementation.

Ideas wanted from you!

Got any other energy saving or environmental ideas or issues fit for reporting? Then contact the Environmental Officer at elisha.ladhams@uwa.edu.au or 6488 7391.

Edited by Elisha Ladhams,
Environmental Officer
Phone: 6488 7391
Email: Elisha.ladhams@uwa.edu.au
www.fm.uwa.edu.au/about/sustainability

Facilities Management
Motorola Building
The University of Western Australia
35 Stirling Hwy Crawley WA 6009